

SMS GSM Alarm Messenger



- ☑ Data Logging
- ☑ Alarm Input
- ☑ Relay Output
- ☑ Voice
- ☑ Temperature
- ☑ Humidity
- ☑ Analog Input

Capture and Send Data via SMS
Report triggered alarm via SMS
Output triggered via SMS
Auto pick up for voice monitoring
Temperature sensor
Humidity sensor
Measuring Analog Channels

GSM Module Integrated

Data Capturing

- Data Capture via 2 x Analog Digital Channels
- Automatic data report via SMS on programmable schedule
- Data report via SMS when receiving SMS command
- Automatic SMS alerts when data is above or below the preset levels
- Low operating voltage alert SMS



Door Contact Alarm
is triggered



Alarm Input

- 8 x Alarm Inputs
- 8 x Phone Numbers Alarm, 2 x Control Centre Numbers
- Arm/Disarm by SMS
- Programmable SMS text for open and close alarm
- Automatic send SMS or dial out to mobile phone on triggered alarm

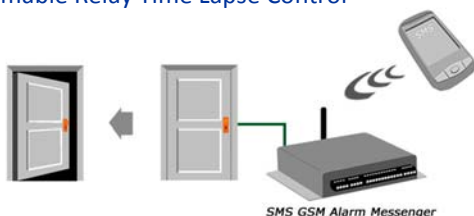
Temperature Humidity Sensor

- [SMS Pro-ST] 2 x Temperature sensors
- [SMS Pro-SX] Temperature & Humidity sensors
- SMS Alert on high or low temperature/humidity
- Turn on/off other device on alarm
- Turn on/off devices on resuming normal
- Temperature & Humidity report via SMS on schedule or command by manual

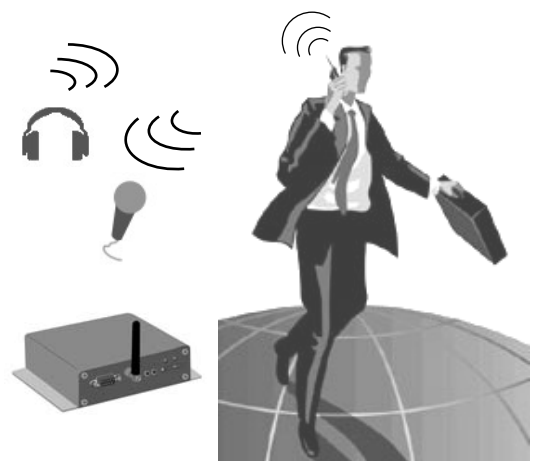


Relay Output

- 3 x Relay Outputs
- Alarm Triggered or SMS Control
- Control by mobile phone SMS
- Programmable Relay Time Lapse Control

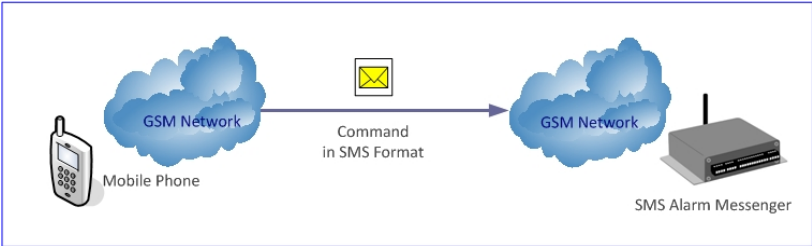
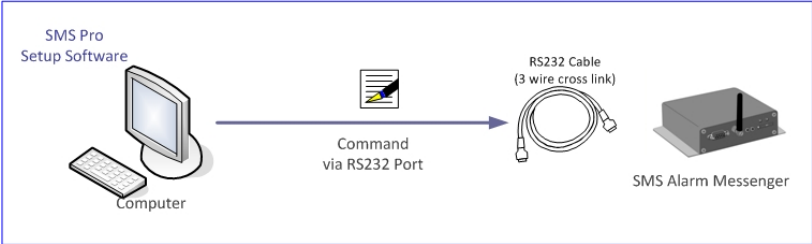
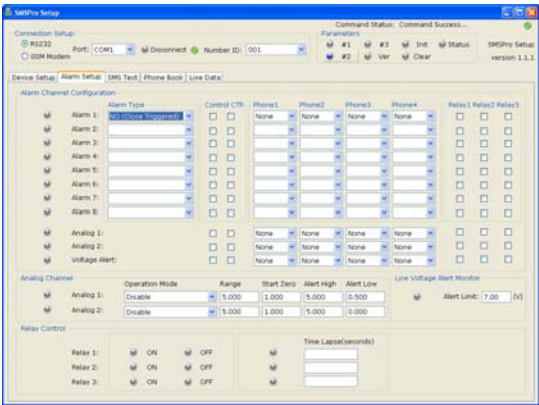


Voice Monitoring /Voice Broadcasting



Easy Setup SMS Alarm Messenger

- SMS Pro-X is equipped with a RS232 serial port for communicating with PC.
- PC Software “SMS Pro-X Setup” is bundled free for configuring the device with Windows based PC.

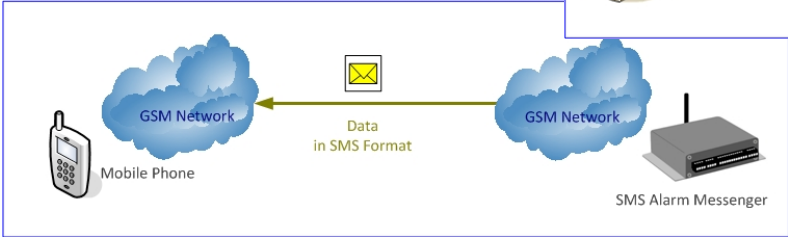
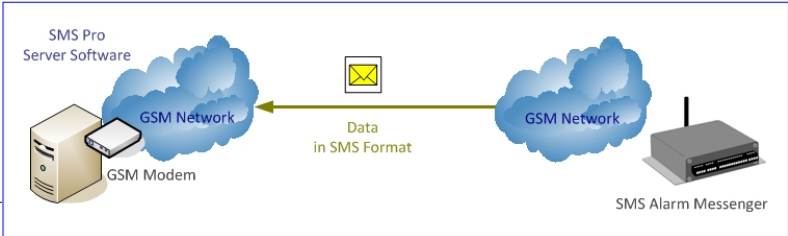


When does SMS Pro send SMS?

- On Schedule
- Manual Request by SMS command
- Alarm Triggered by Digital input
- Alarm Triggered by High/Low Analog Input Levels
- Alarm Triggered by High/Low Temperature/Humidity

How to receive the alarm SMS?

- Using PC with SMS Server software, all SMS will be maintained in database.
- User will receive the alarm SMS with mobile phones simultaneously.



Specification—Temperature & Humidity Sensors [SMS Pro-SX, ST]

Temperature Sensor:	DS18B20
Measuring Range:	-55 ~ 125 °C
Accuracy:	+/- 0.5 °C
Operating Voltage:	3.5 ~ 5.5VDC
Enclosure:	Steel Housing Submersible
Sensor Cable:	2 meter (max. 100m)

Humidity Sensor:	CHM-01A
Measuring Range:	0 ~ 100% RH
Accuracy:	+ 3% RH
Operating Voltage:	3.5 ~ 5.5VDC
Enclosure:	PVC Housing
Sensor Cable:	2 meter (max. 100m)

SMS Pro-SX



GSM SMS Temp & Humidity Alarm Data / Voice / SMS / Alarm / Temp & Humidity Sensor

SMS Pro-SX is the GSM SMS Alarm Device integrated with temperature sensor built-in. It captures the temperature and humidity data detected by the sensors, reports the data, sends alarm SMS when temperature or humidity is over or below user programmable values.

- * 8 alarm inputs, 3 x relay outputs, voice input & output
- * 1 x Temperature & 1 x Humidity Sensor



SMS Pro-ST



GSM SMS Duo Temperature Alarm Data / Voice / SMS / Alarm / Temp Sensor

SMS Pro-ST is the GSM SMS Alarm Device integrated with temperature sensor built-in. It captures the temperature data detected by the sensor, reports the data, sends alarm SMS when temperature is over or below user programmable values.

- * 8 alarm inputs, 3 x relay outputs, voice input & output
- * 2 x Temperature Sensor



SMS Pro-X



GSM SMS Alarm Messenger Data / Voice / SMS / Alarm

SMS Pro-X is the most advanced GSM SMS Alarm Device integrated with Siemens GSM Dual Band Module (900/1800MHz). It captures data, monitor alarm inputs, sends alarm messages and data by SMS to mobile phone over the GSM network.

- * 8 alarm inputs, 3 x relay outputs, voice input & output, 2 x analog digital channels

SMS Pro



GSM SMS Alarm Messenger SMS / Alarm

SMS Pro-X is the most advanced GSM SMS Alarm Device integrated with Siemens GSM Dual Band Module (900/1800MHz). It captures data, monitor alarm inputs, sends alarm messages and data by SMS to mobile phone over the GSM network.

- * 8 alarm inputs, 3 x relay outputs

SMS Basic



GSM SMS Alarm Messenger SMS / Alarm

SMS Basic is the GSM SMS Alarm Device integrated with Siemens GSM Dual Band Module (900/1800MHz) providing the basic functions. It detects alarm inputs, triggers the relay outputs, sends alarm messages by SMS to mobile phone over the GSM network.

- * 8 alarm inputs, 1 x relay outputs

SMS GSM Messenger

Features

- ◆ Alarm Report by phone dial & SMS alarm message
- ◆ SMS alarm message text programmable
- ◆ Independent text message for each alarm
- ◆ Independent text message for close or open triggered alarm
- ◆ Configuration setup by GSM mobile phone or PC (RS232)
- ◆ Arm/Disarm by GSM mobile phone
- ◆ Relay triggered by Alarm or SMS command
- ◆ Sound monitoring connecting to microphone
- ◆ Alarm Alert Modes – SMS, Phone Dial or Both

Alert

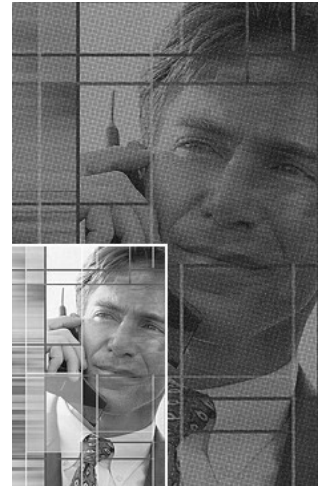
- ◆ GSM Network signal strength detection and alert
- ◆ Automatic Health Status report to GSM mobile phone
- ◆ Automatic power supply voltage level checking
- ◆ Automatic reporting on low power voltage level
- ◆ Alert message when analog inputs are higher or lower than preset values
- ◆ Reply message verifying the receipt of each command

Specification

- 8 x Alarm Inputs N/C, N/O, State Change
 - ▶ DC8~15V Input
- 3 x Relay Outputs, NC/NO
 - ▶ 4Max. 230VAC, 1A relay
- 8 x Alarm Phone Number
- 2 x Central Station phone number
- 2 channels x Analog Channels
 - ▶ 4~20mA current type input for sensors
 - ▶ Programmable high/low alarm values
- Temperature Sensor (-55 ~ 125°C)
- Humidity Sensor (1~99 RH)

Operation

Power Source:	DC8~15VDC, 1A
Power Rating:	
Send/Receive SMS:	~300mA
Standby Mode:	~20mA
Max. Rating:	<2A
Operating Temp:	-30 ~ 70°C
Standby:	-45 ~ 85°C
Dimension:	105 x 134 x 29 mm
GSM Module:	GSM Quad Band



Key Points

Features	Basic	Pro	Pro-X	Pro-SX	Pro-ST
Alarm Input	8	8	8	8	8
Relay Output	1	3	3	3	3
Phone Number	8 + 2	8 + 2	8 + 2	8 + 2	8 + 2
Low Voltage Alert	SMS Alarm	SMS Alarm	SMS Alarm	SMS Alarm	SMS Alarm
Program by SMS	✓	✓	✓	✓	✓
Program by PC software	✓	✓	✓	✓	✓
Analog Input Channel	—	—	2	—	—
AD High/Low Alert	—	—	SMS Alarm	—	—
Temp/Hum High Low Alert	—	—	—	SMS Alarm	SMS Alarm
Sensor	—	—	—	Temperature Humidity	2 x Temperature
GSM Quad Band	900/1800 850/1900	900/1800 850/1900	900/1800 850/1900	900/1800 850/1900	900/1800 850/1900